

TIP PARADE

DE SCHIJVEN:

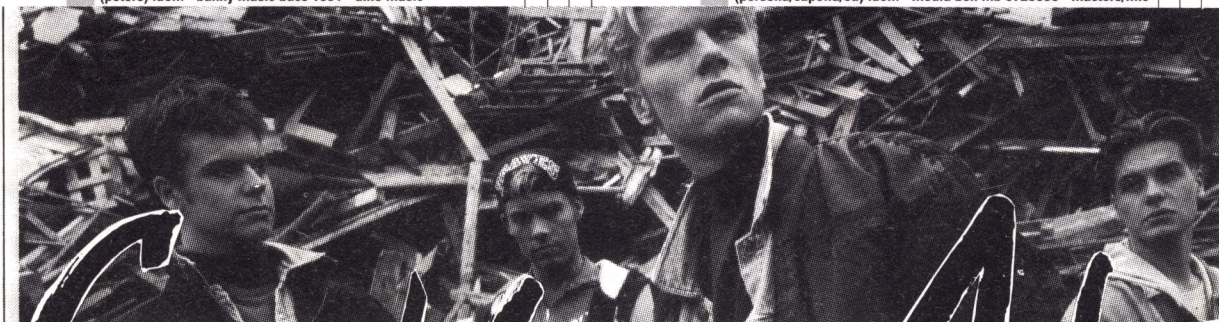
ALARMSCHIJF - must be crazy for me - m etheridge - ariola
 RADIO 2 PARADEPLAAT - domani - al bano & romina power - warner
 RADIO 3 MEGA HIT - informer - snow - warner
 RADIO 538 HOLL. HIT TIP - beauty & the beast - chess - dino music
 RADIO 538 PRACHTPLAAT - bad to the bone - inner circle - warner



ALARMSCHIJF

MUST BE CRAZY FOR ME
 melissa etheridge
 island 135902 - ariola

| deze week | voorgaande week | titel - artiest (prod.) comp. - label cdms bestelnr. - platenmij. | NL | 7" | CDS | deze week | voorgaande week | titel - artiest (prod.) comp. - label cdms bestelnr. - platenmij. | NL | 7" | CDS |
|-----------|-----------------|---|----|----|-----|-----------|-----------------|--|----|----|-----|
| 1 | 22 | 2 MUST BE CRAZY FOR ME - melissa etheridge (mccormick/etheridge) etheridge - island 135902 - ariola | | | • | 16 | 18 | 5 COULD IT BE MAGIC - take that (manilow/anderson) levine - rca 123123 - rca | | | |
| 2 | 9 | 4 I FEEL YOU - depeche mode (flood) lyon/dickie - mute 2060219 - cnr/indisc | | | • | 17 | 19 | 3 PEOPLE OF THE WORLD - sasha (hamilton) pal - multitone 136672 - ariola | | | • |
| 3 | 15 | 3 DON'T TALK INNOCENCE - daluxe (hoogeboezem/ea) stok/ea - mercury 8648982 - phonogram | • | | • | 18 | 30 | 2 JUMP THEY SAY - david bowie (bowie/rogers) idem - arista 136962 - ariola | | | • |
| 4 | 5 | 5 PRESSURE - billy ocean (ocean/johnson/browne) idem - jive 420902 - zomba | | | • | 19 | 21 | 4 FEEL LIKE SINGIN' - sandy b (scott/thompson) idem - nervous 8649052 - phonogram | | | • |
| 5 | 6 | 5 THE LOVE I LOST - west end feat. sybil (stock & waterman) idem - pwl 4509916412 - warner | | | | 20 | 26 | 2 SAD BUT TRUE - metallica (rock/hetfield/ulrich) idem - vertigo 8649432 - phonogram | | | |
| 6 | 12 | 3 BAD GIRL - madonna (madonna/ea) ciccone/ea - maverick 9362408122 - warner | | | • | 21 | 25 | 2 DRIVING MY LIFE AWAY - grant & forsyth (koelwijjn) rabbit/ea - dino dncs 2095 - dino music | | | • • |
| 7 | 11 | 4 I PUT A SPELL ON YOU - bryan ferry (bob clearmountain) virgin 1400 cdcdt - virgin | | | • | 22 | 29 | 2 HIP HOP HOORAY - naughty by nature (naughty by nature) idem - tommy boy 2000018 - cnr/indisc | | | • |
| 8 | 10 | 4 GIVE IT TO YOU - martha wash (brian alexander morgen) idem - rca 133882 - rca | | | | 23 | — | 1 BABY HE'S MINE - room 42 (tizer/mania) idem - dance factory dfr 4152 - ramshorn | | | |
| 9 | 23 | 2 DOE NIET ZO MOEILJK - normaal (jolink/ea) hoogeboezem/ea - mercury 8620602 - phonogram | • | | • | 24 | — | 1 C'MON PEOPLE - paul mccartney (mccartney) mccartney/mendelsohn - parlophone 8805462 - emi | | | |
| 10 | 28 | 2 WOULD? - alice in chains (jorden/alice in chain) cantrell - columbia 6588882 - sony | | | • | 25 | — | 1 NAAR FABELJES LAND - tutf (bos/valkenier) jolen abs rec ar002cd - dureco | | | |
| 11 | 13 | 4 SEX - lois lane (prince) idem - lana lane 8613362 - polydor | | | • | 26 | — | 1 HEART ATTACK & VINE - screamin' jay hawkins (t waits) idem - epic 6591351 - sony music | | | • |
| 12 | 24 | 2 MY NUMBER ONE - bzn (veerman/ea) beltman - mercury 8621402 - phonogram | | | • | 27 | — | 1 INFORMER - snow (mc shan) o'brian/ea - east west 7567960722 - warner | | | |
| 13 | 16 | 4 I WANNA STAY WITH YOU - undercover (steve mac) gallagher/lyle - warner 4509918712 - warner | | | • | 28 | — | 1 IN VUUR EN VLAM - benny neyman (scholten) aristakis/neyman - cnr scd 2000006 - cnr/indisc | | | • • |
| 14 | 20 | 4 WE ARE FAMILY/I want your love.. - sister sledge (rodgers/edwards) idem - dance factory dfr 4149 - ramshorn | | | • | 29 | — | 1 AIN'T NO MAN - dina carroll (lowis/mackintosh) lowis - a&m 580272 - polydor | | | • • |
| 15 | 27 | 2 EENMAAL IN JE LEVEN - zangeres zonder naam (peters) idem - bunny music bucs 1001 - dino music | • | | • | 30 | — | 1 U GOT TO KNOW - capella (persona/capella/ea) idem - media ben mb 6723035 - masters/imc | | | • |



Caught IN THE Act

NEW SINGLE

**GONNA
MAKE U
MINE**

Nu bij aankoop
van deze CD-single
een gratis poster*

(*zolang de voorraad strekt)

