



de nederlandse top 40

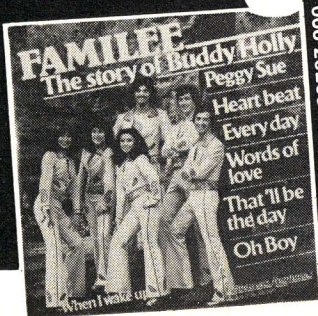
de eerste, de beste

DE NEDERLANDSE TOP 40 IS SAMENGESTELD DOOR DE STICHTING NEDERLANDSE TOP 40 UIT GEGEVENS VAN HANDEL EN INDUSTRIE

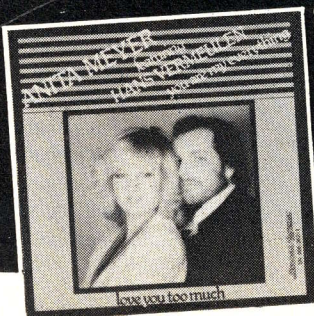
| deze week | vorige week | Titel - Artist - (Producer) - Componist Label & bestelnnummer - Distributiemij | aantal weken | deze week | vorige week | Titel - Artist - (Producer) - Componist Label & bestelnnummer - Distributiemij | aantal weken |
|-----------|-------------|--|--------------|-----------|-------------|---|--------------|
| 1 | 2 | FIRE - pointer sisters b. springsteen - elektra 12327 - wea | 4 | 21 | 33 | MAMA LEONE - bino (bino) r. vaplus/b. arico - cnr 144.612 - cnr | 2 |
| 2 | 1 | CHIQUITITA - abba (anderson/ ulvaeus) andersson/ulvaeus - 2001.850 - pol. | 7 | 22 | 36 | GET DOWN - gene chandler (c davis) j. thompson - 20th cent. 6162.149 - phon. | 2 |
| 3 | 4 | NOW THAT WE FOUND LOVE - third world (3rd world) gamble/huff - isl. 100.034, ariola | 6 | 23 | 14 | LE FREAK - chic n. rodgers/b. edwards - atlantic 11209 - wea | 12 |
| 4 | 12 | LAY YOUR LOVE ON ME - racey (m. most) chinn/chapman - rak 5c 006.61988 - emi | 4 | 24 | 15 | SOME KIND OF WONDERFUL - grand funk j. ienner) j. ellison - capitol 5c 006.81816 - emi | 6 |
| 5 | 9 | HEART OF GLASS - blondie (chapman) harry/stein - chrys. 100.337 - ar. | 4 | 25 | 28 | BORN TO BE ALIVE - patrick hernandez (hernandez) hernandez - aquarius jc 55.558 - cnr | 2 |
| 6 | 6 | DON'T LOOK BACK - peter tosh (shakespeare) - 5c 006.61657 - emi rec. | 10 | 26 | 17 | MAAKT VAN UW SCHEET EEN DONDRSLAG - de breedbekkickers (kickers zelf) - 100.291 - ariola | 6 |
| 7 | 13 | TRAGEDY - bee gees (bee gees) b., m. & r. gibb - rso 2090.340 - polydor | 3 | 27 | 34 | ADOLESCENT SEX - japan (r. singer) d. sylvian - hansa 100.072 - ariola | 2 |
| 8 | 7 | EVERYTIME I THINK OF YOU - the babys (nevison) kennedy/conrad - chrys. 100.231 - ariola | 7 | 28 | - | SHAKE YOUR GROOVE THING - peaches & herb (perren) d. fekaris/f. perren - 2066.992 - polydor | 1 |
| 9 | 18 | THE RUNNER - three degrees (moroder) moroder/ferguson - 100.286 - ariola | 3 | 29 | 21 | LINDA LINDA - tee set (r. beltman) v. eyck/ tetteroo/boesveld - merc. 6013.525 - phonogram | 6 |
| 10 | 3 | YOU TOOK THE WORDS RIGHT OUT OF MY MOUTH - meatloaf - epic 6729 - cbs | 7 | 30 | 19 | CONTACT - edwin starr (starr)/ puhan/dickerson - 20th cent. fox 6162.151 - phon. | 5 |
| 11 | 8 | HOW YOU GONNA SEE ME - alice cooper cooper/taupin/wagner - wb 17.270 - wea | 9 | 31 | 26 | B.A.B.Y. - rachel sweet (l. sterberg/ p. solly) hayes/poter - stiff buy 39 h - dureco | 5 |
| 12 | 29 | SHAKE YOUR BODY - jacksons (jacksons) r&m. jackson - epic 7124 - cbs | 2 | 32 | - | AIN'T LOVE A BITCH - rod stewart (t. dowd) stewart/grainger - wb 17302 - wea | 1 |
| 13 | 11 | I WAS MADE FOR DANCIN' - leif garrett (m. lloyd) - atlantic 11.202 - wea | 5 | 33 | - | SHARING THE NIGHT - dr hook (haffkine) aldrige/struzick - capitol - emi records | 1 |
| 14 | 10 | IK BEN VERLIEFD OP JOHN TRAVOLTA - sandy (shot) peters/vd ven/lurech/lirach - 6012.863 - pho. | 9 | 34 | - | AMERICAN GENERATION - ritchie family (moral) moral/belolo/hurt - ariola 100.285 - ariola | 1 |
| 15 | 23 | RUTHLESS QUEEN - kayak (d. mackay) i. linders/t. scherpenzeel - vertigo 6012.961 - phon. | 3 | 35 | - | CUBA - gibson brothers (zagora) j. kluger/d. vangarde - 144.659 - cnr | 1 |
| 16 | 20 | DON'T STOP ME NOW - queen (queen/thomas) mercury - 5c 006.62276 - emi rec. | 4 | 36 | 32 | LET'S START THE DANCE - hamilton bohannon (h. bohannon) bohannon - merc. 6167 700 - phon. | 3 |
| 17 | 22 | SAVE THE LAST DANCE - jerry lee lewis/friends pomus/shuman - 144.661 - cnr | 3 | 37 | 24 | MY LIFE - billy joel (p. ramone) b. joel - cbs 6821 - cbs | 5 |
| 18 | 27 | DISCO REALLY MADE IT - gruppo sportivo (h. v.d. burg/r. j. stips) van de fruits - 100.335 - ari. | 2 | 38 | 16 | YMCA - village people (moral/belolo/ willis) moral - phil 6075.045 - phonogr. | 13 |
| 19 | 5 | 'K HEB HELE GROTE BLOEMKOOLE - andré van duin (a. kraamer) a. van duin - cnr 141.523 - cnr | 7 | 39 | 25 | I LOVE THE NIGHTLIFE - alicia bridges (buckingham) hutcheson - 2066.936 - pol. | 8 |
| 20 | - | WILD PLACES - duncan browne (d. browne) - logo 006.62304 - emi rec. | 1 | 40 | 31 | LATE NIGHT SHOW - tiffany (r & f bolland) r & f bolland - 5n 006.26086 - bov./negram | 7 |

wordt uitgezonden op radio veronica; vrijdag hilversum 3 van 16 tot 18 uur

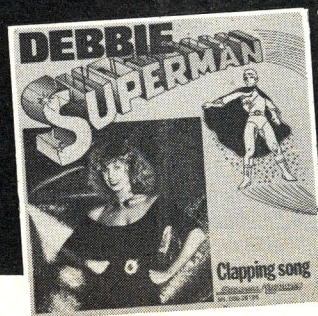
single SUPERTRIO



FAMILIEE
The story of Buddy Holly
006-26206



ANITA MEYER
You are my everything
006-26211



DEBBIE
Superman
006-26196

Bovema Negram